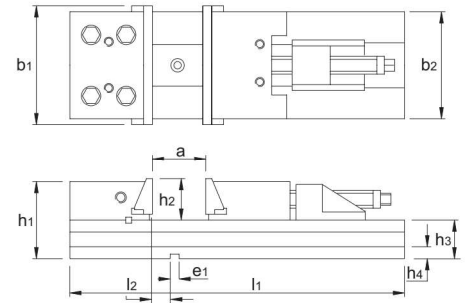


**> 88.440 TORAX**

NL Precisie Machinespanklem  
FR Étau de fraisage de précision  
ES Mordaza mecánica de precisión  
DE Präzisionsschraubstöcke  
EN Precision Compact Vise



Ref.	b1	b2	l1	l2	h1	h2	h3	h4	a max	e1 N6	Max. daN
88.440.1027	100	75	270	25.61	65	30	35	15	100	16	3000
88.440.1234	125	95	345	25.61	80	40	40	15	150	16	3000
88.440.1542	150	125	420	25.61	100	50	50	20	200	16	5000
88.440.1552	150	125	520	25.61	100	50	50	20	300	16	5000
88.440.1745	175	145	455	25.61	118	60	58	20	200	16	6000
88.440.1755	175	145	555	25.61	118	60	58	20	300	16	6000
88.440.1765	175	145	655	25.61	118	60	58	20	400	16	6000
88.440.1775	175	145	755	25.61	118	60	58	20	500	16	6000
88.440.2059	200	170	595	25.61	135	65	70	26	300	16	10000
88.440.2069	200	170	695	25.61	135	65	70	26	400	16	10000
88.440.2079	200	170	795	25.61	135	65	70	26	500	16	10000
88.440.3063	300	195	635	25.61	158	80	78	26	300	16	12000
88.440.3073	300	195	735	25.61	158	80	78	26	400	16	12000
88.440.3083	300	195	835	25.61	158	80	78	26	500	16	12000
88.440.3093	300	195	935	25.61	158	80	78	26	600	16	12000



NL Opspannen product in precisieklem  
FR Serrer une pièce dans un étau de précision  
ES Sujetar un producto en una mordaza de precisión  
DE Einspannen von Werkstücken im Präzision Machineschraubstock  
EN Clamping material in precision vise

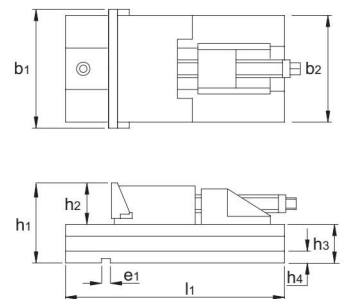
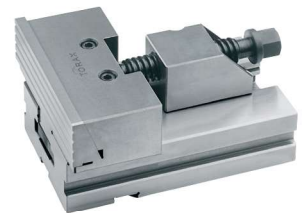
Watch me



www.phantom.eu

**> 88.470 TORAX**

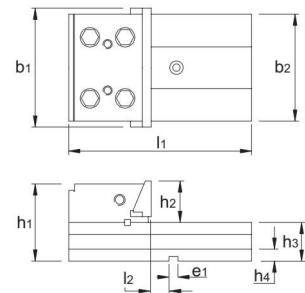
NL Bewegbare Precisie Machinespanklem  
FR Étau machine mobile de précision  
ES Mordaza mecánica de alta precisión rotativa  
DE bewegbare Präzisions Maschinenklemme  
EN Movable Precision Machine Vise



Ref.	b1	b2	h1	h2	h3	h4	l1	e1 N6	Ref.	b1	b2	h1	h2	h3	h4	l1	e1 N6
88.470.1250	125	95	80	40	40	15	160	16	88.470.1750	175	145	118	60	58	20	240	16
88.470.1500	150	125	100	50	50	20	230	16	88.470.2000	200	170	135	65	70	26	300	16

> 88.472 **TORAX**

NL Vaste Precisie Machinespanklem  
 FR Étau machine fixe de précision  
 ES Mordaza Mecánica de precisión fija  
 DE Präzisions Maschinenschraubstöcke  
 EN Fixed Precision Machine Vise

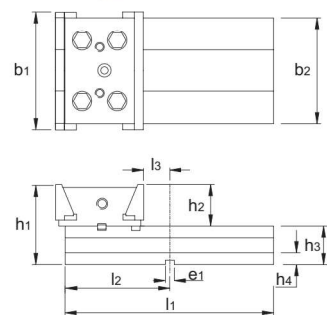


Ref.	b1	b2	h1	h2	h3	h4	l1	l2	e1	N6
88.472.1250	125	95	80	40	40	15	160	25.61	16	
88.472.1500	150	125	100	50	50	20	230	25.61	16	

Ref.	b1	b2	h1	h2	h3	h4	l1	l2	e1	N6
88.472.1750	175	145	118	60	58	20	240	25.61	16	
88.472.2000	200	170	135	65	70	26	300	25.61	16	

> 88.474 **TORAX**

NL Vaste Dubbele Precisie Machinespanklem  
 FR Étau machine fixe double de précision  
 ES Mordaza Mecánica de doble precisión fija  
 DE Präzisions Maschinenschraubstock mit Doppelspannung  
 EN Fixed Double Precision Machine Vise

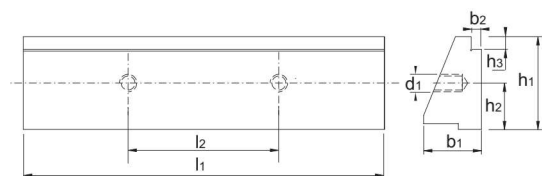


Ref.	b1	b2	h1	h2	h3	h4	l1	l2	l3	e1	N6
88.474.1250	125	95	80	40	40	15	160	71	33.6	16	
88.474.1500	150	125	100	50	50	20	230	122.5	33.6	16	

Ref.	b1	b2	h1	h2	h3	h4	l1	l2	l3	e1	N6
88.474.1750	175	145	118	60	58	20	240	79	33.6	16	
88.474.2000	200	170	135	65	70	26	300	155	33.6	16	

> 88.475 **TORAX**

NL Set Getrapte Bekken voor precisie machinespanklem 88.440, 88.470 en 88.472  
 FR Jeu de Mors avec méplat pour étau de haute précision 88.440, 88.470 et 88.472  
 ES Juego de Garras escalonada para mordaza mecánica de alta precisión 88.440, 88.470 y 88.472  
 DE Satz Stufenbacke für Präzisionsschraubstöcke 88.440, 88.470 und 88.472  
 EN Set Step jaw plate for Precision Vise 88.440, 88.470 and 88.472

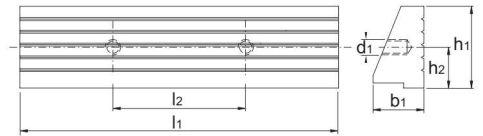


Ref.	l1	h1	b1	l2	h2	d1	b2	h3	Type
88.475.1002	100	24.5	14	20	10	M6	3	5	1
88.475.1004	100	24.5	14	62	10	M6	3	5	2
88.475.1202	125	32	19	32	15	M8	3	5	1
88.475.1204	125	32	19	80	15	M8	3	5	2
88.475.1502	150	40	24	50	19	M8	5	5	1

Ref.	l1	h1	b1	l2	h2	d1	b2	h3	Type
88.475.1504	150	40	24	90	19	M8	5	5	2
88.475.1702	175	43	24	50	20.5	M8	5	5	1
88.475.1704	175	43	24	116	20.5	M8	4	5	2
88.475.2002	200	53	30	76	25.5	M10	5	10	1
88.475.2004	200	53	30	138	25.5	M10	5	10	2

**> 88.476 TORAX**

- NL Set Standaard Gegroefde Bekken voor precisie machinespanklem 88.440, 88.470 en 88.472  
 FR Jeu de Mors rainurés standards pour étau de haute précision 88.440, 88.470 et 88.472  
 ES Juego de Garras escalonada para mordaza mecánica de alta precisión 88.440, 88.470 y 88.472  
 DE Satz Stufenbacke für Präzisionsschraubstöcke 88.440, 88.470 und 88.472  
 EN Set Grooved jaw plate for Precision Vise 88.440, 88.470 and 88.472

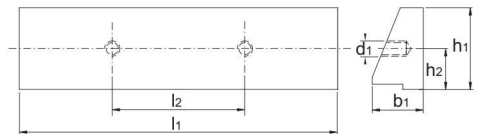


Ref.	l1	h1	b1	l2	h2	d1	Type
88.476.1002	100	24.5	14	20	10	M6	1
88.476.1004	100	24.5	14	62	10	M6	2
88.476.1202	125	32	19	32	15	M8	1
88.476.1204	125	32	19	80	15	M8	2
88.476.1502	150	40	24	50	19	M8	1
88.476.1504	150	40	24	90	19	M8	2

Ref.	l1	h1	b1	l2	h2	d1	Type
88.476.1702	175	43	24	50	20.5	M8	1
88.476.1704	175	43	24	116	20.5	M8	2
88.476.2002	200	53	30	76	25.5	M10	1
88.476.2004	200	53	30	138	25.5	M10	2
88.476.3002	300	63	35	90	30.5	M10	1
88.476.3004	300	63	35	181	30.5	M10	2

**> 88.477 TORAX**

- NL Set Gladde Bekken voor precisie machinespanklem, 88.440, 88.470 en 88.472  
 FR Jeu de Mors lisses pour étau de haute précision 88.440, 88.470 et 88.472  
 ES Juego de garras lisas para mordaza mecánica de alta precisión 88.440, 88.470 y 88.472  
 DE Satz glatte Backen für Präzisionsschraubstöcke 88.440, 88.470 und 88.472  
 EN Set Smooth vise grips for Precision Vise 88.440, 88.470 and 88.472

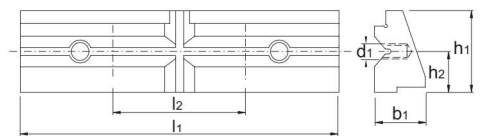


Ref.	l1	h1	b1	l2	h2	d1	Type
88.477.1002	100	24.5	14	20	10	M6	1
88.477.1004	100	24.5	14	62	10	M6	2
88.477.1202	125	32	19	32	15	M8	1
88.477.1204	125	32	19	80	15	M8	2
88.477.1502	150	40	24	50	19	M8	1
88.477.1504	150	40	24	90	19	M8	2

Ref.	l1	h1	b1	l2	h2	d1	Type
88.477.1702	175	43	24	50	20.5	M8	1
88.477.1704	175	43	24	116	20.5	M8	2
88.477.2002	200	53	30	76	25.5	M10	1
88.477.2004	200	53	30	138	25.5	M10	2
88.477.3002	300	63	35	90	30.5	M10	1
88.477.3004	300	63	35	181	30.5	M10	2

**> 88.478 TORAX**

- NL Set Prismabekken voor precisie machinespanklem, 88.440, 88.470 en 88.472  
 FR Jeu de Mors prismatiques pour étau de haute précision 88.440, 88.470 et 88.472  
 ES Juego de Garras prismáticas para mordaza mecánica de alta precisión 88.440, 88.470 y 88.472  
 DE Satz Prismabacken für Präzisionsschraubstöcke 88.440, 88.470 und 88.472  
 EN Set Clamping Inserts for Precision Vise 88.440, 88.470 and 88.472



Ref.	l1	h1	b1	l2	h2	d1	Type
88.478.1004	100	24.5	14	62	10	M6	2
88.478.1204	125	32	19	80	15	M8	2
88.478.1504	150	40	24	90	19	M8	2

Ref.	l1	h1	b1	l2	h2	d1	Type
88.478.1704	175	43	24	116	20.5	M8	2
88.478.2004	200	53	30	138	25.5	M10	2



- NL Neerdrukwerking bekken precisie machineklem in spanwijde  
 FR Montage des mors sur un étau de précision  
 ES Acción de amarre-descendente, garras de mordaza de precisión  
 DE Niederzugwirkung Spannbacken präzisionsschraubstock  
 EN Pull down action jaws precision vise

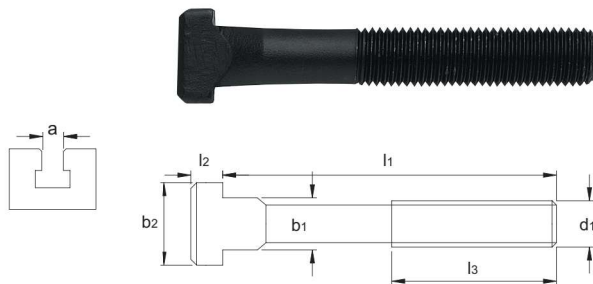
Watch me



www.phantom.eu

> 88.600

NL T-Gleufbout, kwaliteit 8.8  
 FR Boulon en T, qualité de résistance 8.8  
 ES Tensor para ranuras T, calidad 8.8  
 DE T-Nutenschrauben, Qualität 8.8  
 EN Bolt for T-slots, quality 8.8



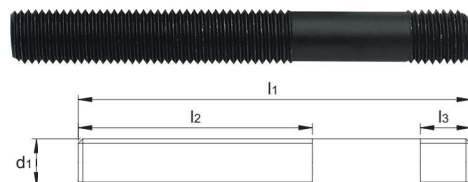
DIN  
787

Ref.	a	d1	l1	l3	b1	l2	b2
88.600.1004	10	M10	40	30	9.7	6	15
88.600.1006	10	M10	63	45	9.7	6	15
88.600.1010	10	M10	100	60	9.7	6	15
88.600.1205	12	M12	50	35	11.5	7	18
88.600.1206	12	M12	63	40	11.5	7	18
88.600.1208	12	M12	80	55	11.5	7	18
88.600.1210	12	M12	100	63	11.5	7	18
88.600.1212	12	M12	125	75	11.5	7	18
88.600.1216	12	M12	160	100	11.5	7	18
88.600.1220	12	M12	200	120	11.5	7	18
88.600.1405	14	M12	50	35	13.5	8	22
88.600.1406	14	M12	63	40	13.5	8	22
88.600.1408	14	M12	80	55	13.5	8	22
88.600.1410	14	M12	100	63	13.5	8	22
88.600.1412	14	M12	125	75	13.5	8	22
88.600.1416	14	M12	160	100	13.5	8	22
88.600.1420	14	M12	200	120	13.5	8	22
88.600.1606	16	M14	63	45	15.5	9	25
88.600.1610	16	M14	100	63	15.5	9	25
88.600.1616	16	M14	160	100	15.5	9	25
88.600.1620	16	M14	200	120	15.5	9	25
88.600.1625	16	M14	250	160	15.5	9	25
88.600.1706	16	M16	63	45	15.5	9	25
88.600.1708	16	M16	80	55	15.5	9	25
88.600.1710	16	M16	100	63	15.5	9	25
88.600.1716	16	M16	160	100	15.5	9	25
88.600.1720	16	M16	200	125	15.5	9	25
88.600.1725	16	M16	250	160	15.5	9	25
88.600.1806	18	M16	63	45	17.5	10	28
88.600.1808	18	M16	80	55	17.5	10	28
88.600.1810	18	M16	100	63	17.5	10	28

Ref.	a	d1	l1	l3	b1	l2	b2
88.600.1816	18	M16	160	100	17.5	10	28
88.600.1820	18	M16	200	125	17.5	10	28
88.600.1825	18	M16	250	160	17.5	10	28
88.600.2008	20	M20	80	55	19.5	12	32
88.600.2010	20	M20	100	63	19.5	12	32
88.600.2012	20	M20	125	85	19.5	12	32
88.600.2016	20	M20	160	110	19.5	12	32
88.600.2020	20	M20	200	125	19.5	12	32
88.600.2025	20	M20	250	160	19.5	12	32
88.600.2031	20	M20	315	180	19.5	12	32
88.600.2208	22	M20	80	55	21.5	14	35
88.600.2210	22	M20	100	63	21.5	14	35
88.600.2212	22	M20	125	85	21.5	14	35
88.600.2216	22	M20	160	100	21.5	14	35
88.600.2220	22	M20	200	125	21.5	14	35
88.600.2225	22	M20	250	160	21.5	14	35
88.600.2231	22	M20	315	180	21.5	14	35
88.600.2410	24	M24	100	70	23.5	16	40
88.600.2412	24	M24	125	85	23.5	16	40
88.600.2416	24	M24	160	110	23.5	16	40
88.600.2420	24	M24	200	125	23.5	16	40
88.600.2425	24	M24	250	160	23.5	16	40
88.600.2431	24	M24	315	180	23.5	16	40
88.600.2440	24	M24	400	250	23.5	16	40
88.600.2810	28	M24	100	70	27.5	18	44
88.600.2812	28	M24	125	85	27.5	18	44
88.600.2816	28	M24	160	110	27.5	18	44
88.600.2820	28	M24	200	125	27.5	18	44
88.600.2825	28	M24	250	160	27.5	18	44
88.600.2831	28	M24	315	180	27.5	18	44
88.600.2840	28	M24	400	250	27.5	18	44

> 88.605

NL Draadeind, kwaliteit 8.8  
 FR Goujon, qualité de résistance 8.8  
 ES Tensor sin cabeza, calidad 8.8  
 DE Stiftschrauben, Qualität 8.8  
 EN Stud, quality 8.8



DIN  
6379

Ref.	d1	l1	l2	l3
88.605.0604	M6	40	20	9
88.605.0606	M6	60	37	9
88.605.0607	M6	70	50	9
88.605.0608	M6	80	60	9
88.605.0804	M8	40	20	11
88.605.0806	M8	63	40	11
88.605.0808	M8	85	55	11
88.605.0810	M8	100	63	11
88.605.0812	M8	125	75	11
88.605.1005	M10	50	25	13
88.605.1008	M10	80	50	13
88.605.1010	M10	100	63	13
88.605.1012	M10	125	75	13
88.605.1014	M10	140	80	13
88.605.1016	M10	160	100	13
88.605.1205	M12	50	25	15
88.605.1206	M12	63	32	15
88.605.1208	M12	80	50	15
88.605.1210	M12	100	63	15
88.605.1212	M12	125	75	15
88.605.1216	M12	160	100	15
88.605.1220	M12	200	125	15
88.605.1406	M14	63	32	17
88.605.1410	M14	100	50	17
88.605.1412	M14	125	75	17

Ref.	d1	l1	l2	l3
88.605.1416	M14	160	100	17
88.605.1420	M14	200	125	17
88.605.1425	M14	250	160	17
88.605.1606	M16	63	32	19
88.605.1608	M16	80	50	19
88.605.1610	M16	100	63	19
88.605.1612	M16	125	75	19
88.605.1616	M16	160	100	19
88.605.1620	M16	200	125	19
88.605.1625	M16	250	160	19
88.605.1631	M16	315	180	19
88.605.1808	M18	80	50	23
88.605.1810	M18	100	63	23
88.605.1812	M18	125	75	23
88.605.1816	M18	160	100	23
88.605.1820	M18	200	125	23
88.605.1825	M18	250	160	23
88.605.1831	M18	315	180	23
88.605.2008	M20	80	32	27
88.605.2010	M20	100	63	27
88.605.2012	M20	125	75	27
88.605.2016	M20	160	100	27
88.605.2020	M20	200	125	27
88.605.2025	M20	250	160	27
88.605.2031	M20	315	180	27



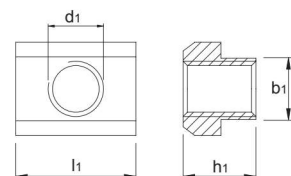
## &gt; 88.605

Ref.	d1	l1	l2	l3
88.605.2040	M20	400	250	27
88.605.2210	M22	100	45	31
88.605.2212	M22	125	75	31
88.605.2216	M22	160	100	31
88.605.2220	M22	200	125	31
88.605.2225	M22	250	160	31
88.605.2231	M22	315	180	31
88.605.2240	M22	400	250	31
88.605.2410	M24	100	45	35
88.605.2412	M24	125	75	35
88.605.2416	M24	160	100	35
88.605.2420	M24	200	125	35
88.605.2425	M24	250	160	35
88.605.2431	M24	315	180	35
88.605.2440	M24	400	250	35
88.605.2450	M24	500	315	35
88.605.2712	M27	125	75	39
88.605.2716	M27	160	100	39

Ref.	d1	l1	l2	l3
88.605.2720	M27	200	125	39
88.605.2725	M27	250	160	39
88.605.2731	M27	315	180	39
88.605.2740	M27	400	250	39
88.605.2750	M27	500	315	39
88.605.3012	M30	125	55	43
88.605.3016	M30	160	100	43
88.605.3020	M30	200	125	43
88.605.3025	M30	250	160	43
88.605.3031	M30	315	180	43
88.605.3040	M30	400	250	43
88.605.3050	M30	500	315	43
88.605.3616	M36	160	80	51
88.605.3620	M36	200	125	51
88.605.3625	M36	250	160	51
88.605.3631	M36	315	200	51
88.605.3640	M36	400	250	51
88.605.3650	M36	500	315	51

## &gt; 88.610

NL T-Gleufmoer, kwaliteit 10  
FR Ecrrou en T, qualité de résistance 10  
ES Cabeza-T, calidad 10  
DE Muttern für T-Nuten, Qualität 10  
EN T-Nut, quality 10

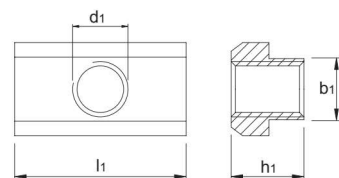
DIN  
508

Ref.	a	d1	l1	h1	b1
88.610.0806	8	M6	13	10	7.7
88.610.1008	10	M8	15	12	9.7
88.610.1208	12	M8	18	14	11.7
88.610.1210	12	M10	18	14	11.7
88.610.1410	14	M10	22	16	13.7
88.610.1412	14	M12	22	16	13.7
88.610.1612	16	M12	25	18	15.7
88.610.1614	16	M14	25	18	15.7
88.610.1812	18	M12	28	20	17.7
88.610.1814	18	M14	28	20	17.7
88.610.1816	18	M16	28	20	17.7
88.610.2016	20	M16	32	24	19.7

Ref.	a	d1	l1	h1	b1
88.610.2018	20	M18	32	24	19.7
88.610.2216	22	M16	35	28	21.7
88.610.2220	22	M20	35	28	21.7
88.610.2420	24	M20	40	32	23.7
88.610.2422	24	M22	40	32	23.7
88.610.2820	28	M20	44	36	27.7
88.610.2824	28	M24	44	36	27.7
88.610.3224	32	M24	50	40	31.5
88.610.3227	32	M27	50	40	31.5
88.610.3624	36	M24	54	44	35.5
88.610.3630	36	M30	54	44	35.5
88.610.4236	42	M36	65	52	41.6

## &gt; 88.612

NL T-Gleufmoer, lange uitvoering, kwaliteit 10  
FR Ecrrou en T allongé, qualité de résistance 10  
ES Cabeza-T, versión larga, calidad 10  
DE Muttern für T-Nuten, langes Modell, Qualität 10  
EN Extended T-Nut, quality 10

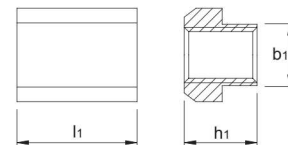
DIN  
508-L

Ref.	a	d1	l1	h1	b1
88.612.1008	10	M8	30	12	9.7
88.612.1210	12	M10	36	14	11.7
88.612.1412	14	M12	44	16	13.7
88.612.1614	16	M14	50	18	15.7
88.612.1816	18	M16	56	20	17.7
88.612.2018	20	M18	64	24	19.7

Ref.	a	d1	l1	h1	b1
88.612.2220	22	M20	70	28	21.7
88.612.2422	24	M22	80	32	23.7
88.612.2824	28	M24	88	36	27.7
88.612.3227	32	M27	100	40	31.5
88.612.3630	36	M30	108	44	35.5

> 88.613

NL T-Gleufmoer, onbewerkt  
 FR Ecrou en T borgne  
 ES Cabeza-T en bruto  
 DE T-Nutenstein, Rohling  
 EN Blank for T-Nuts



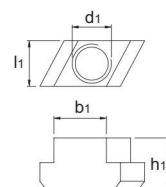
DIN  
508-R

Ref.	a	l1	h1	b1
88.613.1000	10	15	12	9.7
88.613.1200	12	18	14	11.7
88.613.1400	14	22	16	13.7
88.613.1600	16	25	18	15.7
88.613.1800	18	28	20	17.7
88.613.2000	20	32	24	19.7

Ref.	a	l1	h1	b1
88.613.2200	22	35	28	21.7
88.613.2400	24	40	32	23.7
88.613.2800	28	44	36	27.7
88.613.3200	32	50	40	31.5
88.613.3600	36	54	44	35.5

> 88.614

NL T-Gleufmoer, systeem "Rhombus"  
 FR Ecrou en T, système "Rhombus"  
 ES Cabeza-T, sistema "Romboidal"  
 DE Muttern für T-Nuten, System "Rhombus"  
 EN T-Nut, system "Rhombus"

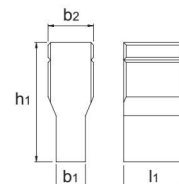


Ref.	a	d1	l1	h1	b1
88.614.1008	10	M8	15	12	9.7
88.614.1210	12	M10	18	14	11.7
88.614.1412	14	M12	22	16	13.7
88.614.1614	16	M14	25	18	15.7

Ref.	a	d1	l1	h1	b1
88.614.1816	18	M16	28	20	17.7
88.614.2220	22	M20	32	24	21.7
88.614.2824	28	M24	35	28	27.7

> 88.615

NL T-Gleufsteen, inzetgehard en geslepen  
 FR Lardon percé en T, trempé et rectifié  
 ES Regletas en T, templado y rectificado  
 DE T-Nutensteine, Gehärtet und geschliffen  
 EN T-Block, carburized and ground



DIN  
6323

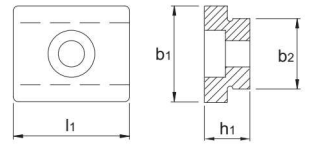
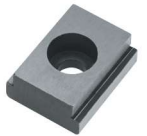
Ref.	b1	b2	h1	l1
88.615.1012	10	12	12	20
88.615.1212	12	12	28.6	20
88.615.1220	12	20	14	32
88.615.1420	14	20	14	32
88.615.1620	16	20	14	32
88.615.1820	18	20	14	32

Ref.	b1	b2	h1	l1
88.615.2020	20	20	45.5	32
88.615.2220	22	20	50.5	40
88.615.2420	24	20	55.5	40
88.615.2820	28	20	61.5	40
88.615.3620	36	20	76.5	50



**> 88.616**

NL T-Gleufsteen, inzetgehard en geslepen  
FR Lardon percé en T, trempé et rectifié  
ES Regletas en T, templado y rectificado  
DE T-Nutensteine, Gehärtet und geschliffen  
EN T-Block, carburized and ground



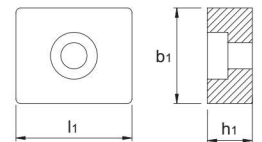
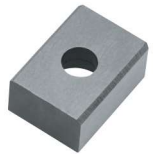
DIN  
6322-A

Ref.	b1	b2	h1	l1
88.616.1000	10	20	10	22
88.616.1200	12	20	10	22
88.616.1400	14	20	10	25
88.616.1600	16	20	10	25
88.616.1800	18	20	10	25

Ref.	b1	b2	h1	l1
88.616.2200	22	20	12	32
88.616.2400	24	20	12	32
88.616.2800	28	20	12	32
88.616.3600	36	20	12	32

**> 88.617**

NL T-Gleufsteen, inzetgehard en geslepen  
FR Lardon percé en T, trempé et rectifié  
ES Regletas en T, templado y rectificado  
DE T-Nutensteine, Gehärtet und geschliffen  
EN T-Block, carburized and ground



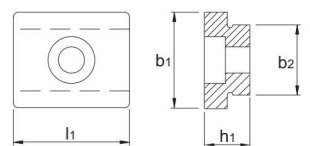
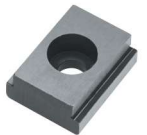
DIN  
6322-B

Ref.	b1	h1	l1
88.617.1000	10	8	20
88.617.1200	12	8	20
88.617.1400	14	10	22
88.617.1600	16	10	22

Ref.	b1	h1	l1
88.617.1800	18	10	22
88.617.2000	20	10	22
88.617.2200	22	12	32
88.617.2400	24	12	32

**> 88.618**

NL T-Gleufsteen, voor machinespanklemmen 88.440, 88.470, 88.472  
FR Lardon percé en T, pour étau 88.440, 88.470, 88.472  
ES Regletas en T, para mordaza mecánica 88.440, 88.470, 88.472  
DE T-Nutensteine, für Präzisionsschraubstöcke 88.440, 88.470, 88.472  
EN T-Block, for vises 88.440, 88.470, 88.472



Ref.	b1	b2	h1	l1
88.618.1200	12	16	10	25
88.618.1400	14	16	10	25
88.618.1600	16	16	10	25
88.618.1800	18	16	10	25
88.618.2000	20	16	12	25

Ref.	b1	b2	h1	l1
88.618.2200	22	16	12	25
88.618.2400	24	16	12	25
88.618.2800	28	16	12	25
88.618.3600	36	16	12	25